

ATTENTION: Assemble all parts on a solid surface (not carpet) or damage will occur!

STEP 1 VERY IMPORTANT!

Assemble all parts on a smooth, hard surface such as wood or concrete.

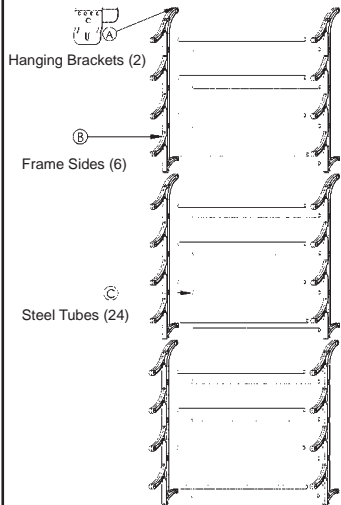
DO NOT assemble on soft surfaces such as carpet or damage will occur.



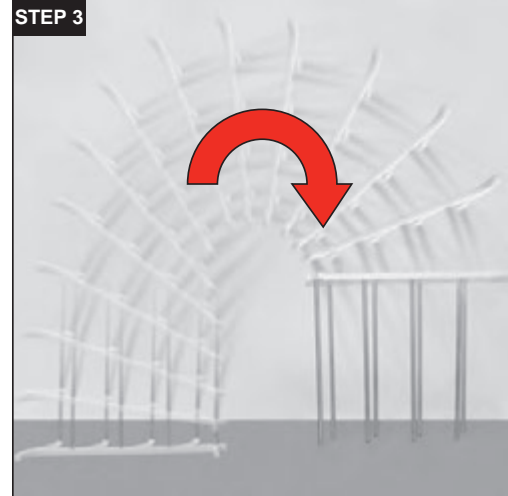
Indentation
The ends of the steel tubes are intentionally indented to ease assembly.

Firmly hammer tubes all the way into each socket. If this is not done, the product will not stay together.

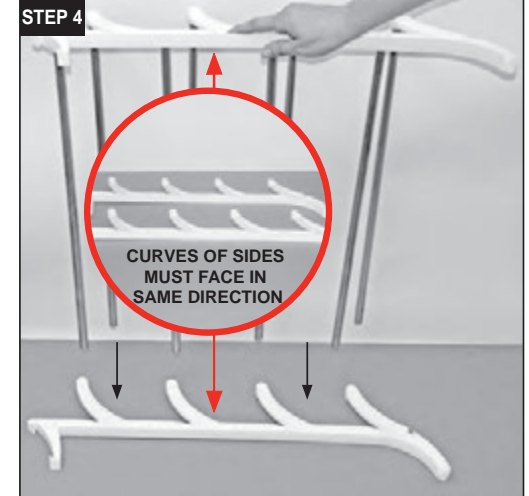
OVERDOOR SHOERACK PARTS LIST



STEP 2: Firmly hammer tubes into each of the eight (8) sockets.



STEP 3: Rotate clockwise, turning assembly over.



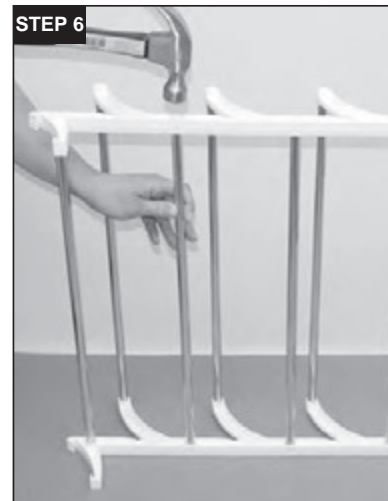
STEP 4: Line up tubes with sockets.

! CURVES OF SIDES MUST FACE IN THE SAME DIRECTION

ONCE TUBES ARE FIRMLY IN SOCKETS, DO NOT ATTEMPT TO REMOVE.

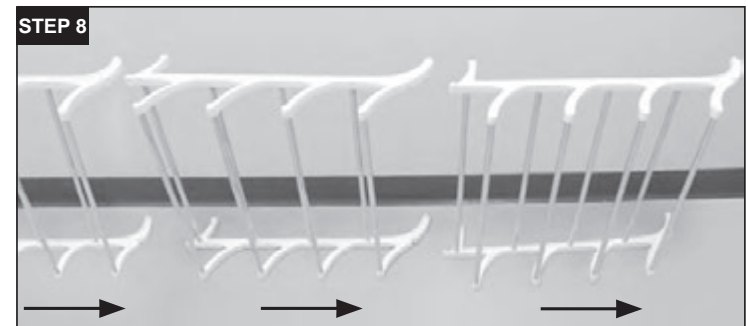


STEP 5: Guide each tube into socket and gently tap to hold in place.



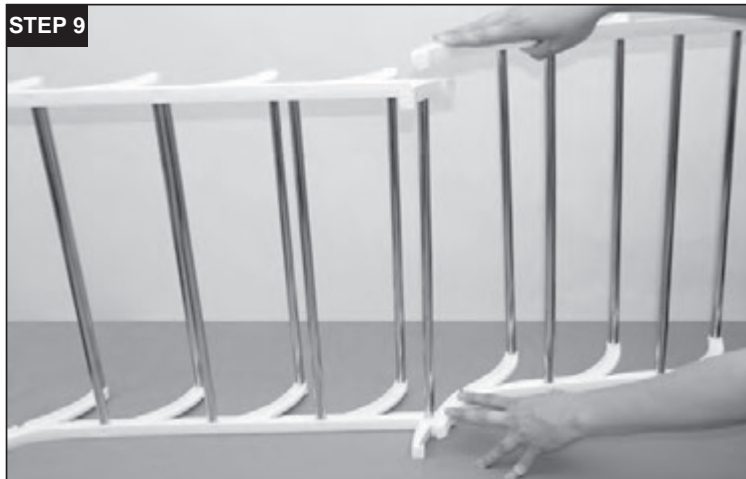
STEP 6: Firmly hammer tubes all the way into sockets. **If this is not done, the product will not stay together.**

STEP 7
Repeat Steps 2-6 with remaining sides and tubes.



STEP 8: Lay completed assemblies end to end facing the same direction.

TURN PAGE OVER FOR REMAINING STEPS ►



STEP 9

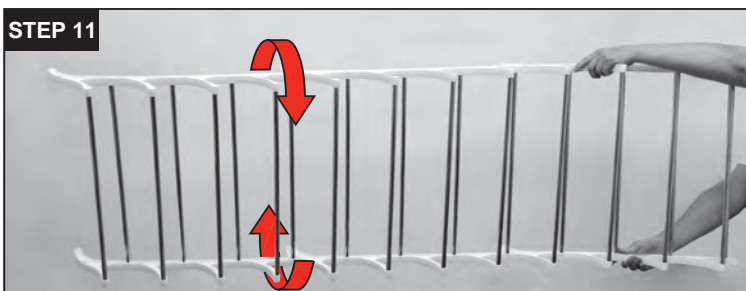
STEP 9: By hand, press the assemblies together to hold in place.



STEP 10

STEP 10: Tap connections together as shown, on a firm surface only.

WARNING! DO NOT TAP CONNECTIONS FROM THE TOP OR DAMAGE WILL OCCUR.



STEP 11

STEP 11: Turn assembly over.



STEP 12

STEP 12: Tap connections together as shown, on a firm surface only.



STEP 13

STEP 13: Place brackets on door and hang shoe rack on brackets. On narrow doors, place OverDoor ShoeRack to the hinged side of the door.

ONCE PRODUCT IS COMPLETELY ASSEMBLED, DO NOT ATTEMPT TO DISASSEMBLE.

Product #1457036, 36 Pair OverDoor ShoeRack Form # 6446
For questions, please call 800-733-5965 © 2009 Lynk®, Inc.

LYNK™
www.lynkinc.com

ARRANGEMENTS

Choose among these arrangements for the best way to store your shoes.



Facing same direction (as shown on package)



Alternating pairs of shoes



Alternating each shoe

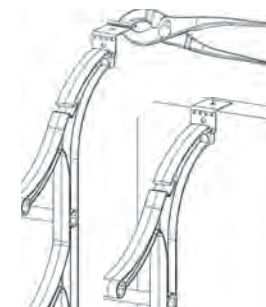
LIMITED WARRANTY AND DISCLAIMER OF LIABILITY

The manufacturer warrants this product against defects in manufacturing and workmanship for a period of ninety (90) days from the date of purchase. For questions, call (800) 733-5965 for customer service. MANUFACTURER DISCLAIMS ALL OTHER WARRANTIES, EITHER EXPRESS OR IMPLIED, INCLUDING BUT NOT LIMITED TO IMPLIED WARRANTIES OF MERCHANTABILITY AND FITNESS FOR A PARTICULAR PURPOSE WITH REGARD TO THE PRODUCT. IN NO EVENT SHALL MANUFACTURER BE LIABLE FOR ANY SPECIAL, INCIDENTAL, INDIRECT, OR CONSEQUENTIAL DAMAGES WHATSOEVER (INCLUDING, WITHOUT LIMITATION, DAMAGES FOR LOSS OF BUSINESS PROFITS, INJURY TO PERSON OR PROPERTY, OR ANY OTHER INCIDENTAL, CONSEQUENTIAL OR PECUNIARY LOSS), OR FOR ATTORNEY'S FEES OR COSTS, ARISING OUT OF THE USE OR OPERATION OF THE PRODUCT.

Optional Installations

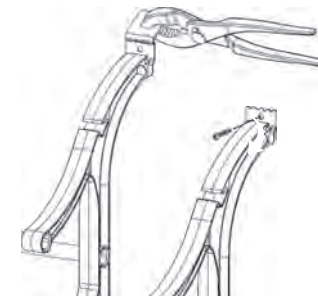
For doors thicker than the standard 1-3/8":

Bend bracket at the **top** score line until back portion breaks off. Then mount to oversized door as shown.



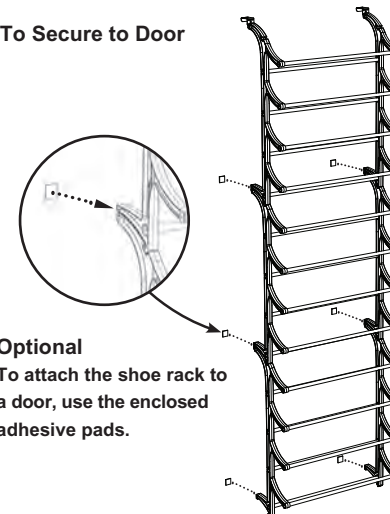
To mount to a wall or surface:

Bend bracket at **front** score line until top portion breaks off. Then mount to wall or surface as shown.



Different mounting hardware may be required depending on surface (hardware not included).

To Secure to Door



Optional

To attach the shoe rack to a door, use the enclosed adhesive pads.